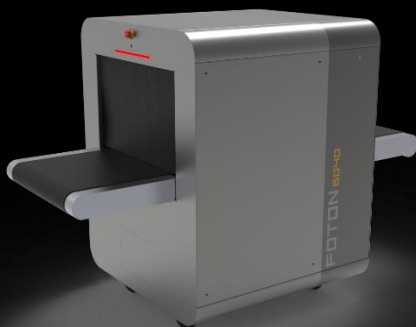




2.5D X-RAY Baggage Scanner

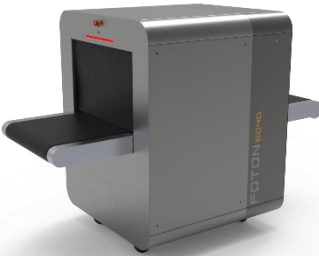
FOTON-X 6040XP Perspective

- 40cmx60cm tunnel size
- Detecting sharp objects placed vertically with perspective imaging
- 160kV anode voltage
- Effective atomic number based classification
- Storing the scanned image of the luggage with the date information and the video of the baggage owner



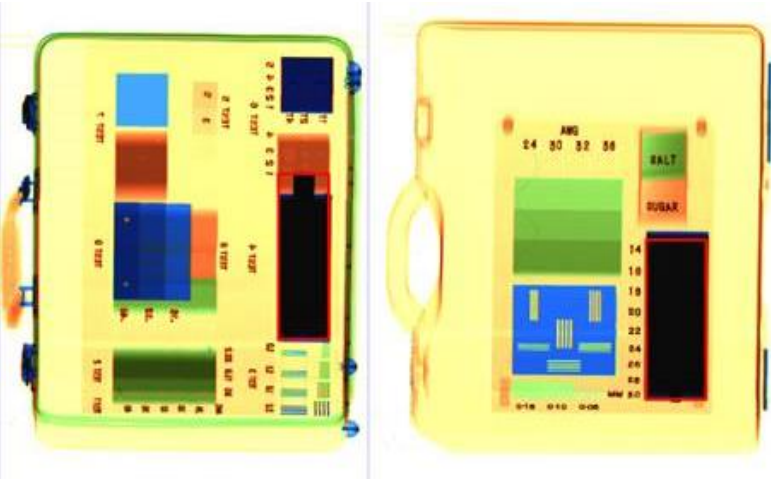
Standard X-Ray Baggage Screening Systems can do 2D imaging and vertically placed sharp objects cannot be displayed in 2D systems.

With 2.5D FOTON-X6040XP Perspective, capable of 2.5D imaging, sharp objects placed vertically can be clearly detected.



With dual energy imaging capacity, FOTON-X6040XP Perspective warns operators against possible threats.

The system stores scanned image of luggage with the video of person who placed the luggage by help of the integrated video cameras. In addition, the system can create artificial threats through the threat image projection library.



SPECIFICATIONS

TECHNICAL SPECIFICATIONS

| | |
|-----------------------|----------------------------|
| Tunnel Size | 60cm x 40cm |
| Anode Voltage | 160kV |
| Wire Resolution | 40 AWG |
| Penetration | 34mm steel |
| Scan direction | Bidirectional scan |
| Storage | >50.000 images |
| Video Recording | Bidirectional video record |
| Conveyor max load | 160kg |
| Operating Temperature | 0°C ~ +40°C |
| Operation Humidity | ≤%90 relative humidity |

IMAGE SPECIFICATIONS

| | |
|-----------------------|---|
| Imaging Technique | Perspective (2.5 D) Imaging |
| Grayscale Image Depth | 16bit (65536 levels) |
| Grayscale Image Depth | 8bit (256 levels) |
| Imaging Mode | 20 modes |
| Classification | Organic – Inorganic/Light Metals – Metals |
| Zoom | 64X |

MS SPEKTRAL SAVUNMA SANAYİ A.Ş. MS SPEKTRAL DEFENCE INDUSTRY

Hacettepe Teknokent Beytepe Kampüsü
4.AR-GE Binası B-Blok No:95/2 06800
Beytepe, Çankaya - ANKARA / TÜRKİYE

Tel: +90 534 225 6368
email: info@msspektral.com
www.msspektral.com

